



# Beaufort County Public Works

## Stormwater Infrastructure

### Project Summary

**Project Summary:** Backache Acres

**Narrative Description of Project:**

Installed grass pavers for pond overflow and hydroseeded for erosion control.

**Completion:** Mar-12

2011-045D / Backache Acres	Labor Hours	Labor Cost	Equipment Cost	Material Cost	Contractor Cost	Indirect Labor	Total Cost
AUDIT / Audit Project	0.5	\$10.24	\$0.00	\$0.00	\$0.00	\$0.00	\$10.24
HAUL / Hauling	23.0	\$492.66	\$306.13	\$593.35	\$0.00	\$0.00	\$1,392.14
HYDR / Hydroseeding	10.0	\$204.80	\$45.23	\$117.74	\$0.00	\$0.00	\$367.77
LR / Level Road	10.0	\$204.80	\$61.70	\$31.77	\$0.00	\$0.00	\$298.27
NONPRO / Non-Professional Services	0.0	\$0.00	\$0.00	\$0.00	\$5,431.06	\$0.00	\$5,431.06
PRRECON / Project Reconnaissance	10.0	\$210.42	\$16.28	\$16.07	\$0.00	\$0.00	\$242.77
SPWY / Spill Way - Installed	59.0	\$1,307.35	\$203.13	\$162.63	\$0.00	\$0.00	\$1,673.11
Indirect Labor, Services and Supplies	0.0	\$0.00	\$0.00	\$0.00	\$0.00	\$1,642.50	\$1,642.50
<b>2011-045D / Backache Acres</b>	<b>112.5</b>	<b>\$2,430.27</b>	<b>\$632.47</b>	<b>\$921.55</b>	<b>\$5,431.06</b>	<b>\$1,642.50</b>	<b>\$11,057.85</b>
<b>Sub Total</b>							
<b>Grand Total</b>	<b>112.5</b>	<b>\$2,430.27</b>	<b>\$632.47</b>	<b>\$921.55</b>	<b>\$5,431.06</b>	<b>\$1,642.50</b>	<b>\$11,057.85</b>

**During**



**After**



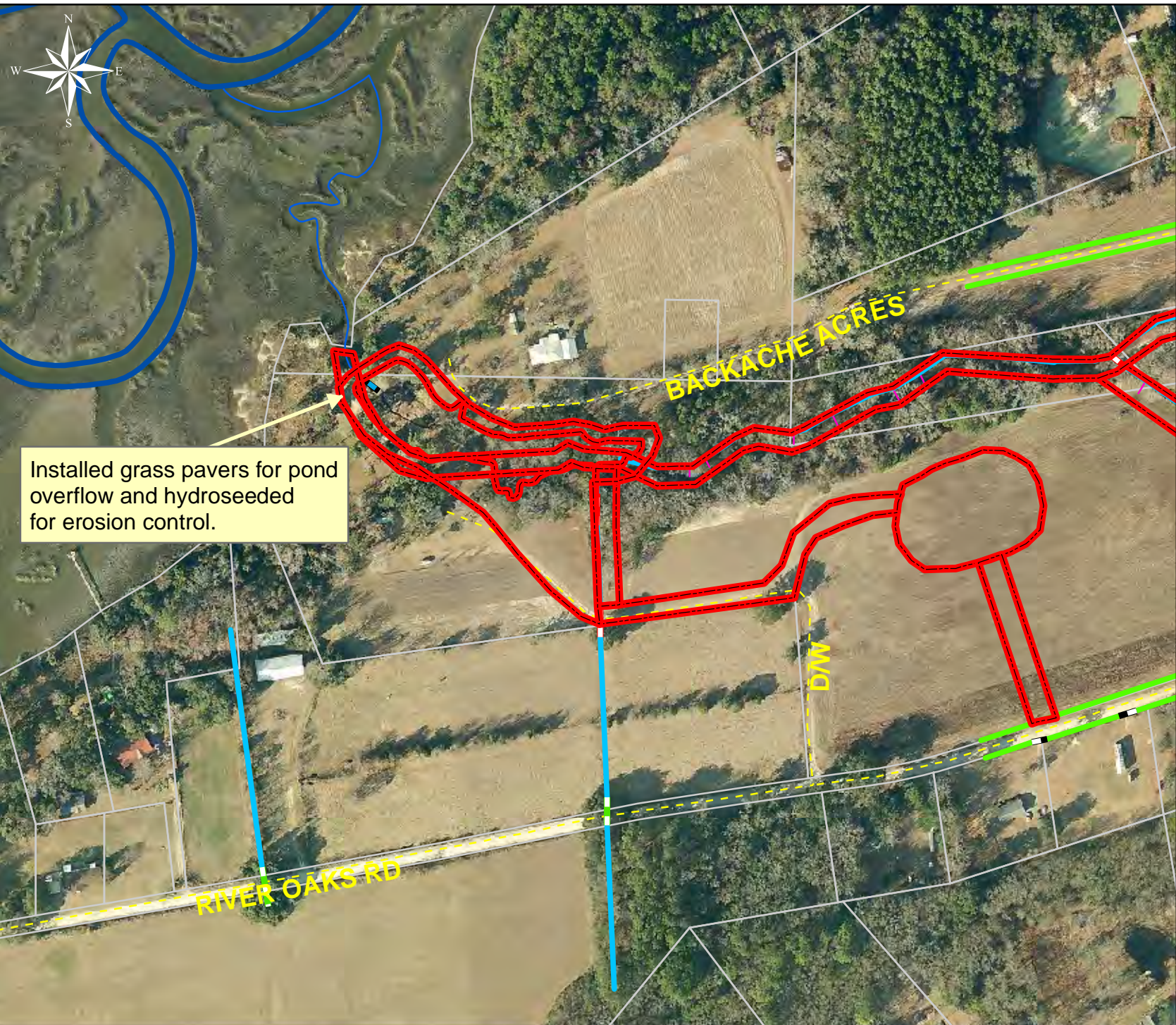
Project: Backache Acres

Activity: Drainage Improvement

Project #: 2011-045D

Township: Sheldon

Completed: March 2012



Installed grass pavers for pond overflow and hydroseeded for erosion control.

**Legend**

- Easements
- Drainage Type**
  - River
  - Stream
  - Outfall
  - Lateral
  - Lateral Pipe
  - Roadside
  - Roadside Pipe
  - Crossline
  - D/W
  - Access
  - Piped
  - Bleeder
  - Parcels



1 inch = 255 feet